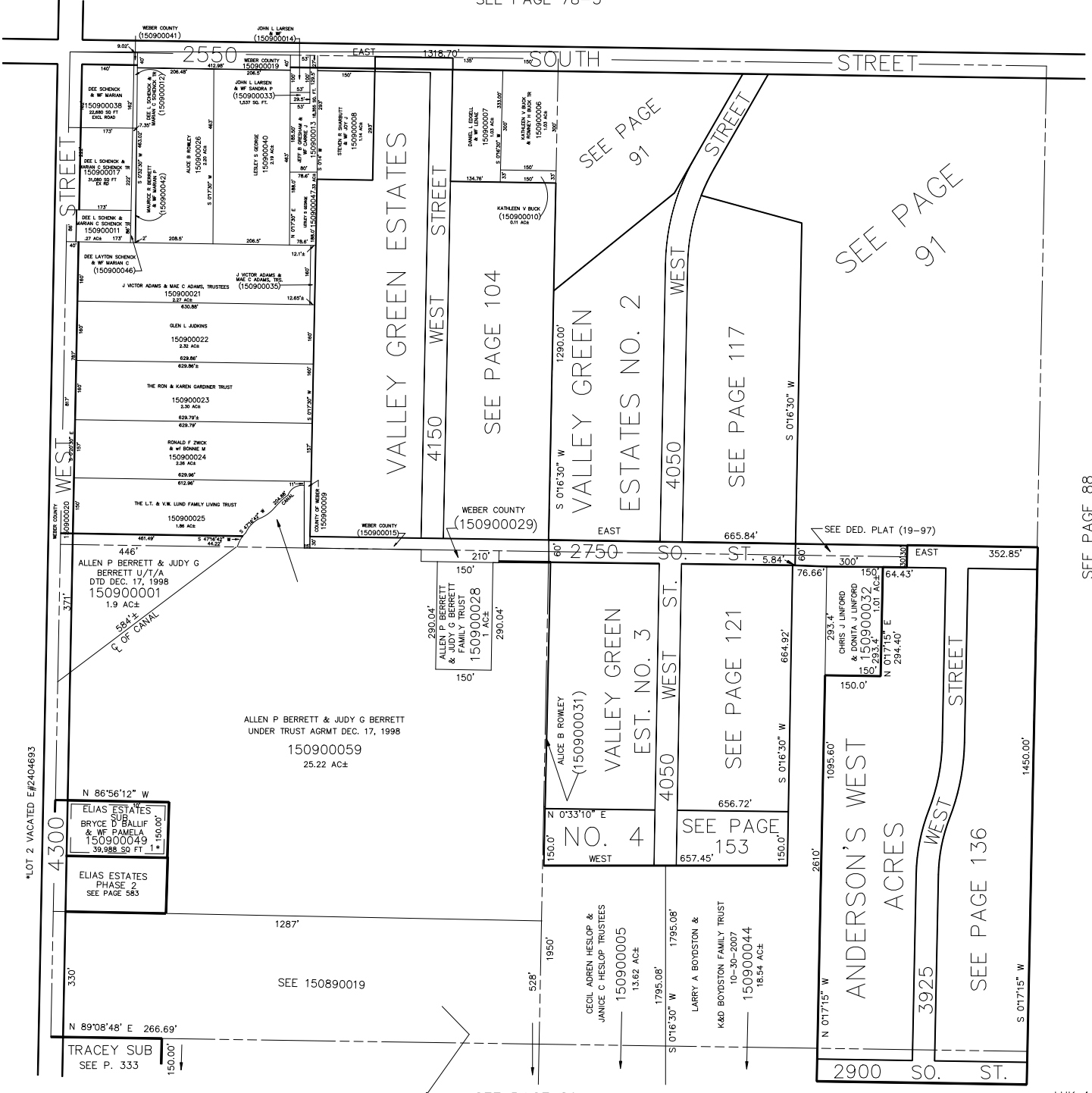


N.W. 1/4
SECTION 33, T.6N., R.2W., S.L.B. & M.

IN WEBER COUNTY
SCALE 1" = 200'

SEE PAGE 78-3

TAXING UNIT: 53



SEE PAGE 83-1

SEE PAGE 91

SEE PAGE 88

SEE PAGE 89

LHK 4-92